

FAQ List for VWGRCLite and VWGRCLite Applications

Subject focal points:

Information source for VOLKSWAGEN Development Partner

Order/Changes

VALIDAT Basis/Professional

VX1/PX1

License Manager

Contact

GRC 7.1.x - What's new

Known Problems



© Copyright **T-Systems International GmbH** 2020

All rights reserved.

Version 6.1 Released as on February 2020

Status: released

Reproduction of any kind, also in extracts, is not permitted without the approval of T-Systems International GmbH

Created for:

T-Systems International GmbH

VWGRCLite-Service

Alessandro-Volta-Straße 11, 38440 Wolfsburg

+49 375 606199-19 (Tel.)

+49 391 580248942 (Fax)

E-Mail: cax-service@t-systems.com

Autors:

Annette Lüer, T-Systems International GmbH

Sabine Itani, T-Systems International GmbH

Thomas Hallmann, T-Systems International GmbH

The information in this document is published without regard for a possible patent protection. Product names are used without regard for free usability. Many hardware and software names are concurrently registered trademarks or should be regarded as such.

Change history

Version	Status	Editor	Modifications / Comments
5.0	12.2013	Lüer	New Document because cessation of VW partner package and release of GRC450
5.1	03.2014	Lüer	2.2.3: Tab substituted by link; 2.2.2 and 12.1 expanded; 3.8 and 5.1 edited; 12.3 and 14.2.3 inserted, resp. new
5.2	10.2014	Lüer	2.3: corrected Link, 4.2: added VEM and VarTool, 10: new phone, 3.5.3 and 3.5.4: DSLS replaced LUM
5.3	12.2014	Lüer	Changes acc. GRC5.3: 3.5, 5, 8, 9,12, 13 and 14 Canceled: 5.2.3, 7.1, 8.1, 8.2, 9.1, 9.2
5.4	12.2015	Lüer	Changes acc. GRC5.4: 2.2.1, 2.2.2, 3.3, 3.5.1, 3.6, 4.2, 5 all chapt., 6,7, 8, 10.2, 12, 12.2 and 14 all chapt. Inserted: 12.1, 12.2 Removed old 12.2
5.5	11.2016	Lüer	Adjusted: 2.2.1, 2.2.2, 3.2, 3.3, 5.1, 7, 10.3 (bevor 10.2), 12, 12.1, 14, 14.1, 14.2.2, 14.2.4.2, 14.2.4.3, 14.2.5 Inserted: 4.3.12, 4.3.13, 10.2, 14.1.7
5.6	12.2017	Lüer	Changes Acc. GRC6.2; Hyperlinks ServiceNet new; Removed chapter 8 (CATIA V4)
5.7	06.2018	Lüer	Changes Acc. GRC6.2.8
5.8	07.2018	Hallmann	Removed: 11.3 Partner package process
5.9	12.2018	Lüer	Changes acc. 6.2.10: 5.1; 2.2.1, 11 Update: 2.2.1, 2.3, 3.5.3, 3.7, 4, 8, 9,10.1, 13 (13.1.1-13.1.7 and 13.2.1-13.2.6 removed) New: 12.4, 4.3.14
6.0	11.2019	Lüer	Changes acc. VWGRCLite7.1.x and CATIA Additional Application replaced by VWGRCLite Application. Update: 3.4 (plus physical), 3.6, 4.2 (Parafix erased), 5, 5.2.3, 5.2.4 (Validat Vers), 7, 9, 9.1.-9.2, 11 Remove: 4.3.14 (Parafix), New: 5.2.1 (inserted enhanced handling result)
6.1	02.2020	Lüer	7: Windows 7 no longer released oslevel, little corrections/rephrasing and Application instead of Additional Applacation at whole document, 4.3.1 u 5.3: insert exact/simplified link analysis, 4.3.8: CREO instead of PRO/E, 5.2: added decision additional benefit VAL Prof, 11.1: update NEWS- Webinstaller

Version	Status	Editor	Modifications / Comments

Table of Content

1.1	Audience	8
1.2	Note for the FAQ list.....	8
1.3	Agreements/Abbreviation for this document.....	8
2	Important information sources.....	9
2.1	ONE.Konzern Business Plattform / VWGroupSupply.....	9
2.2	T-Systems ServiceNet.....	10
2.2.1	Website ServiceNet "VOLKSWAGEN GROUP"	11
2.2.2	ServiceNet account - Registration and "Forgot your password?"	12
2.2.3	ServiceNet - Short links	12
2.3	Special supply "OEM Startpart"	13
3	VWGRCLite applications / VX1 licenses: Order, delivery, changes	14
3.1	T-Systems order process.....	14
3.2	Support Package	14
3.3	Premium Contract Support.....	15
3.4	License type – Nodelocked / Floating / Site / Corporate	15
3.5	Technical specifications for license order / license	16
3.5.1	Technical specifications for VWGRCLite and VWGRCLite Application licenses.....	16
3.5.2	Technical specifications for a license change of the VWGRCLite and/or the VWGRCLite Application 16	
3.5.3	Technical specifications for VX1 licenses – DSLS (Dassault Systèmes License Server)	16
3.5.4	Technical specifications for a VX1 license change	17
3.6	License Switch (VWGRCLite, VWGRCLite Application and VX1).....	17
3.7	Purchasing of PX1 and VX1 License	18
3.7.1	Process of the VX1 order:.....	18
3.8	VWGRCLite – Enhancement of license feature.....	18
4	Licensed VWGRCLite Applications.....	19
4.1	License-Bundle.....	19

4.1.1	Standard package	19
4.1.2	Engineering package	20
4.2	Licensed VWGRCLite Single applications.....	20
4.3	Short descriptions VWGRCLite Applications	21
4.3.1	VALIDAT	21
4.3.2	KVS PlugIn.....	21
4.3.3	NTool	21
4.3.4	Netline V5.....	22
4.3.5	OutGen.....	22
4.3.6	RPS	22
4.3.7	LTA.....	22
4.3.8	DoLittle V5.....	22
4.3.9	BoM2KSL.....	23
4.3.10	VWMetho.....	23
4.3.11	CADGlyph	23
4.3.12	VWGVARTool.....	23
4.3.13	3DZP.....	24
5	VALIDAT	24
5.1	Difference VALIDAT Basis / VALIDAT Professional.....	25
5.2	Benefit of VALIDAT-Professional license.....	26
5.2.1	Check Result - handling and information content of standard check window enlarged.....	26
5.2.2	Automated VALIDAT Check of CATIA Data.....	27
5.2.3	VALIDAT Professional License released automatically	27
5.2.4	VALIDAT CATDua - extra Clean Option	28
5.3	VALIDAT structure analysis	29
5.3.1	Historical background.....	29
6	Benefit of VX1 / PX1 license.....	30
7	Release of operating system / CATIA V5-6 combinations	30

8	License manager FlexNet	31
9	Contacting the VWGRCLite Service Team – Service Desk.....	31
9.1	You direct an inquiry to CAx Service, by telephone or email.....	31
9.2	Reporting errors/problems related to VWGRCLite	32
9.3	Procedure for lodging a request	32
10	Best Practice	33
10.1	One way to configure the KVSPugin.....	33
11	GRC 7.1.x – What's new	34
11.1	NEWS - New DoLittle package 7.0.1.2.0 available - Sep 6, 2019	34
11.2	NEWS - Important information about the VWGRCLite 7.1.5.1.0 patch - Aug 8, 2019	35
12	Known Problems.....	36
12.1	File %TEMP%\inst_grx.lock	36
12.2	Installation on existing VWGRCLite installation.....	36
13	VWGRCLite.....	37
13.1	VWGRCLite – requirements and prerequisites	38
13.2	VWGRCLite – Tips and Tricks	38
13.2.1	Service Net – Quicklinks Brands.....	38
13.2.2	VWGRCLite – Support Mail	39
13.2.2.1	VWGRCLite – Support Mail without Outlook installation	39

1 Introduction

This FAQ list provides answers to the following topics. They are not available in the classic question/answer flow; instead, the corresponding document of frequently asked question is given under a topic.

Topic focal points:
Important question sources
Licenses – Purchase order, Delivery, Change
VWGRCLite
VWGRCLite Applications
Differences VALIDAT Basis / VALIDAT Professional
VX1- / PX1
License manager
Contact

1.1 Audience

This document is directed to the Volkswagen development partners who are interested in the VWGRCLite and the VWGRCLite applications.

1.2 Note for the FAQ list

This document does not demand for completeness and response to all the questions. Please contact us in case of particular questions, suggestion or ambiguities.

1.3 Agreements/Abbreviation for this document

Abbreviation	Meaning
FAQ	Frequently Asked Questions
ServiceNet	T-Systems ServiceNet The Automotive/Manufacturing Competence Center The “VW Group” enter page can be found at: https://vwgroup.t-systems.com e.g. for topics like the VWGRCLite, license orders
VWGroupSupply	VOLKSWAGEN Web Portal for Partner Link: http://www.vwgroupsupply.com (Extra access required)
VW GRC	Volkswagen Group Reference CATIA
VWGRCLite	Volkswagen Group Reference CATIA Lite Defines the CATIA environment at development partner side about participating brands, departments and additional applications.

2 Important information sources

Where can I get information as a VOLKSWAGEN development partner?

With the VOLKSWAGEN contact person in each project
Partner Portal of the VOLKSWAGEN brands
Partner information presentations of the VOLKSWAGEN brands
T-Systems ServiceNet
Trainings

The VOLKSWAGEN contact person should also clarify the following well in advance along with the other topics.
E.g.:

- Access to the VW Group Supply
- Skill specification to the designer
- Necessary requirement of the VOLKSWAGEN additional applications
- VOLKSWAGEN norms/design standards as per which are used

Please note the announcements and proclamations in the partner portals of the VOLKSWAGEN brands and in T-Systems ServiceNet. You can register there for newsletter to some extent.

It is also recommended to see the partner information presentations of the respective brands relevant to you. Except the “first-hand information” you can also address the suggestions and questions directly on the partner information presentations.

Software, documentation and a few Video documents provided for the VWGRCLite and partially for the VWGRCLite applications. This should be provided to the user and read if necessary.

As the use of the VWGRCLite applications is not self-explanatory, it is recommended that the “new” users undergo corresponding trainings (e.g. for: VOLKSWAGEN coaching, AUDI academy).

2.1 ONE.Konzern Business Plattform / VWGroupSupply

The deployment and support for the Volkswagen partner package and its application packages is stopped with the release of the GRC 4.5.0. For this reason, the VOLKSWAGEN Partner Packages is no longer available at the website “VWGroupSupply”. With release of the GRC 4.5.0 suppliers are obligated to work solely with the VWGRCLite.

VOLKSWAGEN Web Portal for VOLKSWAGEN Partner

Link: <http://www.vwgroupsupply.com>

Please note in the VWGroupSupply the announcements/proclamations.

Access is required for the VWGroupSupply that should be assigned via VOLKSWAGEN.

After the successful login you can access the following link:

<https://sso.volkswagen.de/fedl/en/FEDL.catia.html>

This includes information about for CATIA at VOLKSWAGEN, for example Methodology-Guides for download.

2.2 T-Systems ServiceNet

What can I find in ServiceNet?

The T-Systems ServiceNet provides following:

- The currently released VWGRCLite and VWGRCLite applications Software/ Documentation (application bundle/single applications) for downloading
- Information for ordering the VWGRCLite and VWGRCLite application licenses and VX1 licenses (e.g. contract conditions, license model-dependent price information, order pages)
- Suitable license manager for the VWGRCLite and VWGRCLite applications
- Current VX1 software for download
- Additional information for the currently released VWGRCLite applications (e.g. current application versions, integration guidelines)

Where can I get the VX1-Software?

The VX1-Software provides functionalities for the VWGRCLite applications in CATIA V5-6.

If the VX1-Software is not installed, some of the VWGRCLite applications do not run.

The VX1-Software can be downloaded at the following location: <https://wgroup.t-systems.com/vx1>

2.2.1 Website ServiceNet “VOLKSWAGEN GROUP”

The start page for the VOLKSWAGEN Group Reference CATIA Lite (VWGRCLite) is given in ServiceNet in the following link: <https://vwgroup.t-systems.com>.

In the public area you find all relevant about the topic [License Order](#) (application licenses, support, etc.), plus many important additional Information around the Volkswagen Group Reference CATIA (GRC).

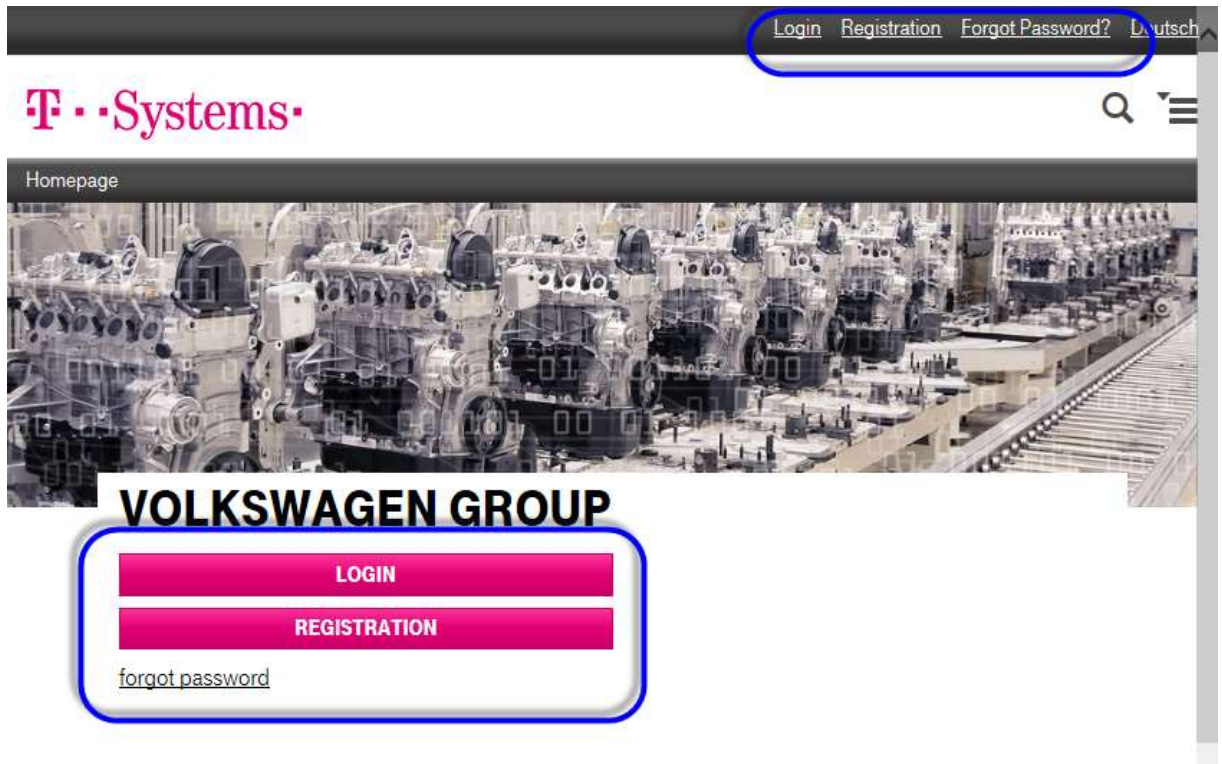
The non-public area of ServiceNet contains downloads of the currently released [VWGRCLite Packages](#). The non-public pages are marked by a red snap-lock symbol.

The screenshot shows the homepage of the Volkswagen Group ServiceNet website. At the top, there is a navigation bar with the T-Systems logo and several menu items: NEWS, LICENSE ORDER, DOWNLOADS, ADDITIONAL INFORMATION, and SPECIALS. A search icon is also present. Below the navigation bar, there is a large banner image of a car engine assembly line. Overlaid on this image is a white box containing the text "VOLKSWAGEN GROUP" in large, bold letters. Below this text are two pink buttons labeled "LOGIN" and "REGISTRATION". A link for "forgot password" is also visible. To the right of the banner, there is a red snap-lock symbol. Below the banner, there are five brand logos: Brand VW, Brand Audi, Brand Skoda, Brand SEAT, and Brand Lamborghini. At the bottom, there are three main content blocks. The first block is titled "CATIA V5-6R2018" and contains text about information on different topics connected with the release change to CATIA V5-6R2018, with a "Find out more" link. The second block is titled "VWGRCLite" and contains text about complex dependencies in the Volkswagen CATIA V5 partner environments, with a "Find out more" link. The third block is titled "T-SYSTEMS ORDER PROCESS" and contains text about creating a contract by yourself with the data you provide in the order tool, with a "Find out more" link.

2.2.2 ServiceNet account - Registration and “Forgot your password?”

To get a ServiceNet Account please use the “Registration” Link at the top right or the “Registration” Button and enter the required information. Please notice the entered E-Mail-Address is equal to your account. Access is granted only after a contract for a VWGRCLite and/or VWGRCLite application has been concluded.

By using link or button “Forgot your password?” a new password could be generated.



2.2.3 ServiceNet - Short links

You could find an overview of all Short links around VWGRCLite at:

<https://vwgroup.t-systems.com/shortlinks>

2.3 Special supply “OEM Startpart”

A general distribution of the "OEM Startpart" for development partner isn't allowed.

The "OEM Startpart" is provided in an extra web site called "Specials".



To access the appropriate page, click on the following link:

<https://vwgroup.t-systems.com/oem-startpart>

If you are interested to access on this site, please send us an e-mail to our address cax-service@t-systems.com and we will generate a username and password for you. Please write as a reference "OEM Startpart is needed". In addition, your full contact details (First name, Surname, e-mail-address, phone number, company address) and an information for which VW / AUDI department your company works, is required.

Please note that your data will be examined by VW / AUDI. After a successful test, the release of the GRC-Specials download area is issued.

3 VWGRCLite applications / VX1 licenses: Order, delivery, changes

3.1 T-Systems order process

T-Systems has changed the order process for the Volkswagen CAA applications. You can create the contract by yourself with the data you provide in the order tool. Hereby you will receive binding price information from us. This is not an internet order process.

Attention! To create the license T-Systems need the signed Order Form sent by you via fax or mail.

Please find a detailed description of the ordering process with the following link

<https://vwgroup.t-systems.com/orderprocess>

Please send the contract via fax to our fax number **+49 391 580 248 942** or via mail to cax-service@t-systems.com

3.2 Support Package

T-Systems provides a support package for your current license period based on the CATIA V5-6 environment of the brand Volkswagen. This allows you or your ICT to retrieve support services when facing problems.

You can order a support package for €400 directly when ordering a license. For new customers the order of the support package is mandatory. Orders of new customers without a support package will not be processed!

The support package contains the following services:

- Support for the installation of VWGRCLite via e-mail or at the discretion of T-Systems via the telephone (up to a maximum of 4 hours of support per contract year).
- Change of licenses for technical reasons permitted once per contract year.

If you as a regular customer wish to order the support package during your current license period the current license must be renewed by 1 year as well. The remaining time of the old license will be credited against.

3.3 Premium Contract Support

T-Systems provides a premium contract support for €200 excl. VAT.

The premium contract support contains the following services:

- Contract related consulting by our consultants – maximum of 1 hour
- Determination and recording of the necessary machine data
- Creating and sending of the contract form via e-mail
- If necessary login to the company-owned order tool

This premium contract support applies to the following products:

- BoM2KSL
- DoLittle
- Engineering Package
- Standard Package
- VALIDAT
- VWMetho

3.4 License type – Nodelocked / Floating / Site / Corporate

Licensing is restricted respectively to one place of use with Nodelocked or Floating licenses. A place of use is defined by the business premises at the postal address stated in the contract form.

Nodelock licenses are issued to a certain physically workstation. The usage is restricted to that physically machine. The quantity of concurrent license users is 1.

Floating licenses are issued to 1 physically license server or 3 physically license servers (triad). They are not restricted to a certain workstation. The quantity of concurrent users is determined by the quantity of ordered licenses. An "Initial Floating license" is a Floating license of a CA application with 1 user on 1 physically license server or a physically triad at 1 place of use. An "Additional Floating license" is an additional license to the "Initial Floating License" of a CA application on the same physically license server or physically triad at the same place of use (same CPU-ID).

Site licenses are Floating licenses. The provided license file will contain 999 Floating licenses.

Corporate licenses are Floating licenses. The provided license file will contain 999 Floating licenses. The use of Corporate licenses is not limited to one site, but to the number of sites specified on the order form. Use at more sites is prohibited.

In the event of an infringement of the license agreement, no support will be provided.

3.5 Technical specifications for license order / license

How do I determine the technical specifications for the license order?

3.5.1 Technical specifications for VWGRCLite and VWGRCLite Application licenses

The VWGRCLite and the VWGRCLite Applications are FlexNet (company FLEXERA SOFTWARE) license-supported. We require some technical specifications from your computer (in case of nodelock licenses) or from your FlexNet Server (in case of Floating licenses) so that your licenses can be created.

WIN: ipconfig /all (MAC address of network card)
AIX: uname -m
redhat: ipconfig /all (MAC address of network card)

In case multiple addresses are output: Please use only the physical address of the Ethernet adapter LAN-Connection as CPU-ID.

3.5.2 Technical specifications for a license change of the VWGRCLite and/or the VWGRCLite Application

If a license switch is necessary, due to a server change e.g., we will require following information:

CPU-ID of the new server
CPU-ID of the current server
Products/Licenses related to the change

It would be helpful to send the old license file, or the license mail we sent before.

3.5.3 Technical specifications for VX1 licenses – DSLS (Dassault Systèmes License Server)

CATIA only supports DSLS. The Software and additional information are available on the Dassault Systems website: (<https://www.3ds.com/support/>).

VX1 is CATIA V5-6 software and DSLS licensed. Technical specifications of your computer (in case of Nodelock licenses) or of your DSLS server (in case of floating licenses) is required so that VX1 licenses can be created.

Under the following link you can find a tool for determining the VX1 DSLS ID:

<http://www.3ds.com/terms/software-keys/?xtmc=DSLicTarget&xtcr=1>

under "LICENSE KEY TOOLS"

3.5.4 Technical specifications for a VX1 license change

If a license switch should be necessary due to, for example, a server change, we will require following information:

DSLS ID and OS level of the new server

DSLS ID and OS level of the current server

It would be helpful to send the old license file or license dispatch mail.

3.6 License Switch (VWGRCLite, VWGRCLite Application and VX1)

Processing a subsequent license change (so-called license switch) for technical reasons permitted once per year for VOLKSWAGEN VWGRCLite or VX1 licenses costs 195 € net.

In order to assign a license switch, please use our change form from the ServiceNet. The change form is available for download in the ServiceNet at topic "[License Order](#)" under heading "Ordering Process".

Please send the signed form to our fax number +49 391 580 248 942.

The change process will be charged per incoming FAX. This change can consist of multiple licenses (VWGRCLite, VWGRCLite Applications, VX1) which are part of this license switch order.

Dassault needs the filled out form „DASSAULT SYSTEM LICENSE KEY REQUEST FORM “ to change the VX1-License. This form could also be downloaded in the ServiceNet at topic "[License Order](#)"

If the VX1 licenses should be changed several times during its validity period, then only the respective processing fee of the change procedure is levied.

If the existing VX1 license expires regularly, it can be ordered on request free of cost. Thereby, a new server can be entered.

3.7 Purchasing of PX1 and VX1 License

Where do I get the PX1 license? How much does the PX1 license cost?

Where do I get the VX1 license? How much does the VX1 license cost?

You can purchase the PX1 license from Dassault, or a Dassault Business Partner. The PX1 license is not free of charge.

As a VOLKSWAGEN development partner you can obtain the VX1 License free of cost through T-Systems if a contract for a VWGRCLite Application has been already concluded (Engineering Package, Standard Package or VWGValidat Professional).

3.7.1 Process of the VX1 order:

What happens with a VX1 order?

T-Systems initiates the generation of the license once weekly with Dassault Systemes. When T-Systems receive the license from Dassault Systemes, it will be delivered immediately to the development partner.

Note:

Dassault generates the VX1 license only if T-Systems provide the following data:

Company and contact person

Street / house number

postal code, city

Email address and

telephone number.

By ordering, you authorize T-Systems to share this information with Dassault.

Note:

A VX1 license requires a PX1 license. A VX1 license without the PX1 license does not bring any functionality.

In order to be able to use the VX1 license, the VX1 software should also be installed at the workstation.

3.8 VWGRCLite – Enhancement of license feature

To use the VWGRCLite, a special FlexNet license feature (VWGRCLITE) is required. VWGRCLite Application license (e.g. VALIDAT, Standard Package or Engineering Package) is delivered with the additional VWGRCLite license with the feature name VWGRCLITE. The VWGRCLite license feature is free of costs and is necessary for the use of the VWGRCLite GUI.

Separate ordering of VWGRCLite licenses is not intended.

For more information according to VWGRCLite please have a look at <https://wvgroup.t-systems.com/vwgrclite-news>

4 Licensed VWGRCLite Applications

VOLKSWAGEN Applications-Bundle and also the VOLKSWAGEN single applications are available in T-Systems ServiceNet.

The applications in the packages provided here and also the single applications are the efficient help material for adhering to the VOLKSWAGEN norms/construction standards in the CAD system CATIA. The adherence to the VOLKSWAGEN norms/construction standards forms the basis for the coordination with the VOLKSWAGEN group.

Where will I get information about the required VWGRCLite applications?

Please coordinate with your VOLKSWAGEN contact person regarding the requirement of the VOLKSWAGEN applications. It can be different depending on your specific task.

4.1 License-Bundle

Why do two License-Bundle existing?

What is the difference between License Bundle “Standard Package” and “Engineering Package”?

Is it possible to order individual components of a package?

The frequently required applications have been compiled in the packages. There are differences in case of the VOLKSWAGEN brands. Thus, it came about that, for example, the specification for the using the Engineering Package has been prepared by AUDI for the development.

The contextual difference between the Engineering Package and Standard Package is that the Standard Package does not include VALIDAT Basis.

Except for VALIDAT, no single components of a bundle can be ordered separately.

4.1.1 Standard package

The standard package consists of:

- KVS-PlugIn
- NTool
- Netline V5
- OutGen
- RPS
- LTA
- VTA

4.1.2 Engineering package

The engineering package consists of:

- VALIDAT Basis
- KVS-PlugIn
- NTool
- Netline V5
- OutGen
- RPS
- LTA
- VTA

4.2 Licensed VWGRCLite Single applications

For the following single application licenses can be ordered:

- BoM2KSL
- DoLittle
- VALIDAT V5 Basis
- VALIDAT V5 Professional
- VWMetho (consists of "ABBRICH", "FLAN" and "SURPRESS")
- VWGCADGlyph
- VWGVarTool
- VWGVEM
- 3DZP (FTACaptureAid license)

4.3 Short descriptions VWGRCLite Applications

At what can the VWGRCLite applications support me?

4.3.1 VALIDAT

VALIDAT assures adherence to the data quality corresponding to the VOLKSWAGEN Norm 01059 part 6. Your CATIA V5-6 documents are checked with some company-specific criteria for the adherence to this norm.

For several messages in VALIDAT repair functions are available.

VALIDAT can carry out a structure analysis of the CATIA model. Validat Basis performs a simplified link analysis, Validat Professional performs an exact link analysis using your PX1 and VX1 license.

A PX1/VX1 license is still needed for automated directory monitoring of assemblies (ZSB, KPR) with VALIDAT Batch (Watch directory). For more details see [VALIDAT structure analysis](#).

The quality of the changed data is evaluated as per the unique criteria with VALIDAT as the check program executes a control of the created CAD data as per the VDA recommendation 4955/4. Thus the quality of the CAD elements and element connections can be determined as per the defined check criteria. According to the check requirements tolerance values can be set and saved. The graphical representation of the check results enable quick and target-oriented search of different areas and elements.

VALIDAT is available in the expansion stage: Basis and Professional. For details see ["Difference VALIDAT Basis / VALIDAT Professional"](#)

4.3.2 KVS PlugIn

The KVS PlugIn provides – like toolbar integrated in CATIA – efficient functions for the structure check of CAD documents, for creating VOLKSWAGEN TAR archives and for saving the data in KVS.

PX1 and VX1 license are additionally required for the KVS PlugIn.

4.3.3 NTool

The VWGRCLite Application name tool V5 (NTool) supports the CAD user while giving standardized document names as per the instructions of the VOLKSWAGEN group. The user will efficiently manage the existing and new documents for the correct naming through screens and menus. The naming conventions saved in the profile can be customized according to the individual requirements. With the corresponding CATIA licenses, NTool continuously supports the avoidance of incorrect links.

PX1 license is required for several NTool functions (see also ["Benefit of VX1 / PX1 license"](#)).

4.3.4 Netline V5

Netline V5 provides the CATIA users with a function using which netlines can be created in the in CATIA V5-6 CATDrawings as well as in the ground level and in any section views with the corresponding caption and with the adjustable netlines distance. The application netline provides functions for creating, modifying and deleting the netgrids. The net to be created is using the line type and line width, line distance, text size and text position as well as the scaling in a panel. The view level is determined automatically and the netgrid is created within the earlier indexed points as connection.

4.3.5 OutGen

Outgen generates interactive menu-driven process chain adapter according to the method instruction of VOLKSWAGEN group.

4.3.6 RPS

RPS is an application to support in CATIA V5-6 the process for the generation of reference elements. Therefore special RPS features are generated and stored in CATIA models. These features can also be displayed in a table.

The application RPS is released since the GRC4.1.1. Basically, you should check with your VOLKSWAGEN contacts which CAAs and which methodology are to be used. In particular tune which RPS is allowed to be used, the VEM/ RPS macro or the CAA-RPS.

4.3.7 LTA

LTA is an application to support in CATIA V5-6 the process for the generation of LTA elements. Therefore special LTA features are generated and stored in CATIA models. These features can also be displayed in a table.

4.3.8 DoLittle V5

DoLittle is a system for creating multilingual CAD-constructions. It supports the constructor online in case of multilingual text entry in the CAD-systems on the basis of a central company-specific collection of design texts.

With DoLittle, T-Systems has the suitable solution platform ready for the development partner of VOLKSWAGEN group: a system for supporting the constructor in case of creating multilingual CAD-constructions on the basis of a company-specific text catalogue. The central data base records a lot of text entries ; unavailable translations can be directly asked for in the system.

Even if the DoLittle-module is independent of the set CAD-system, the specific integration offers special advantages in the leading platforms CATIA® and CREO. DoLittle supports the language directions "German – English", "English - German".

We recommend for more Information about Dolittle the documents "Dolittle_Getting_Started" and "Dolittle_UserManual". Please find this documents as a Zip-archiv for download at <https://wvgroup.t-systems.com/download-dolittle> under section "Dolittle DOCUMENTATION".

4.3.9 BoM2KSL

The VWGRCLite Application “BoM2KSL” provides all essential functions for compliance of the company specifications for parts lists and transfers the created parts list to KSL as background process via XML.

4.3.10 VWMetho

The VWGRCLite Application “VWMetho” consists of the individual elements “ABBRICH”; “FLAN” and “SURPRESS”.

ABBRICH supports the definition/analysis of restriction directions. According to the border angles specified by the user, one or if this is not possible under the compliance of permissible angle, more restriction directions are suggested for the selected restriction edges.

The selected restriction edges are analysed and are marked as IO, warning or critical accordingly. The result of the analysis can be saved in the model. The visualisation is then possible, if required, also without corresponding license.

The application FLAN provides functions for ascertaining the restriction outlines of altered components (adapter) in the areas of non-altered blank (addendum) for CATIA V5-6 and development of upper bevelling parts with constants and with variable radius.

4.3.11 CADGlyph

CADGlyph is a tool for three-dimensional text generation in CATIA V5-6. The text can be generated on surfaces with any curvature. The text is associative and always adjusts to the curve selected, even if the text includes multiple lines. The major advantage of this is that the text is generated with tangentially constant surfaces that are reduced to a minimum. This opens up more possibilities and improves the performance when compared to DXF.

4.3.12 VWGVARTool

VWGVARTool (internal designation: Variants Tool) is a tool to generate and control variants in CATIA V5-6.

A CATIA V5-6 tree structure with all relevant assemblies and parts is transferred by the VWGVARTool automatically into an Excel list. The imported structure result can be smaller and clearer, if using a 3D filter.

Then the user can define in Excel the desired variants. With VWGVARTool can be switched afterwards into a defined variant (CATIA V5-6 view control). The variants control can be transferred also into a pure V5-6-function. In this way it is also possible to use the variants control without VWGVARTool. This V5-6-function was made for group work or suppliers without variants tool.

4.3.13 3DZP

3DZP is a software package to create captures in CATIA V5-6. The package contains the CAA FtaCaptureAid incl. the required settings (FTA: „Functional Tolerancing & Annotation“).

The creation of captures is particularly used at 3DZP for finishing 3D documents.

With a capture you can define views in CATIA V5-6. A capture does not only contain a perspective view of a part it also defines hide- and show elements, dimensioning, texts and tolerances in a preferred zoom factor.

To create captures there have to be views in your CATIA V5-6 data. In the process of 3DZP you have to create at least the “All_Initial_Capture” which can be done with the tool FtaCaptureAid.

FtaCaptureAid can be used in CATParts and CATProducts.

5 VALIDAT

Which uses do I have, if I apply VALIDAT?

What is the difference between the version “VALIDAT Basis” and “VALIDAT Professional”?

What is the meaning of structure analysis with VALIDAT?

With VALIDAT, the quality of exchanged data is assessed as per the uniform criteria, because the checking program executes a checking of created CAD-data according to the VDA-suggestion 4955/4. Thus the quality of CAD-elements and element connections is ascertained as per defined checking criteria. The tolerance values can be set and saved according to the checking requirements. The graphical representation of checking results enables a quick and target-oriented detection of various areas and elements.

5.1 Difference VALIDAT Basis / VALIDAT Professional

With the VALIDAT Software, a current criteria list is delivered. In this list, there is a comparison of repairing services between basic and professional expansion. Apart from that, it can also be ascertained from this list, whether specified criteria for VOLKSWAGEN are relevant or not.

In the consideration in case of repairing services, the difference is that two of them are only in the version "VALIDAT Professional", otherwise the versions are identical. The following table shows which out of them are currently available.

Below is the overview of sorted criteria list with the differences between basis and professional with reference to the relevance for the VOLKSWAGEN criteria.

	A	B	C	D	JW	JX	JY	JZ	KA
1									
2	VALIDAT V5 / Version 7.0.2								
3					Active	KO	Warn	Info	Repair
4			ID	Beschreibung					
85			O-CM-IC	Item data consistency incorrect	X		X		bas
91			O-CM-IP/CONNPROP	Old CONNECT properties	X		X		bas
102			O-CM-OO	OutGen/IPP Status	X	X			bas
106			O-CM-PA/PROPRPR	Inconsistent Parameter and Properties (Repairable)	X		X	X	bas
111			O-CM-PN/NTOOL	Inconsistent NTool properties	X	X			bas
114			O-CM-PR	User defined properties	X	X	X		bas
120			O-CM-TP	TopoCheck	X	X	X		bas
122			O-CM-VE/SF_HIDE	Wrong Display of Solid and Surface (show instead of hide)	X		X		bas
123			O-CM-VE/SF_SHOW	Wrong Display of Solid and Surface (hide instead of show)	X		X		bas
134			O-CM-WS/VTALOCK	VTA elements unlocked	X	X			bas
135			O-CM-WS/TYPE	Wrong Type of Design	X	X		X	prof
146			O-GL-LY	Layer used	X			X	bas
161			O-CS-NS	No standard coordinate system	X	X	X		bas
162			O-CS-NV	Non-standard coordinate system visible	X	X	X	X	bas
198			O-PR-VE/SHOW	Non-standard element visibility (only Show/No Show)	X	X		X	bas
219			D-OR-LV	Locked views	X	X	X		bas
223			D-OR-PF	Missing plot frame points (view size)	X	X		X	prof
228			D-OR-SS	Non-standard scale	X	X			bas
234			D-OR-VP	Wrong view projection method	X	X		X	bas
236			S-PR-AP	Non-standard accuracy parameters	X	X	X	X	bas
237			S-PR-MU	Non-standard magnitude unit	X	X			bas
238			S-PR-SM	Non-standard shading mode	X	X	X		bas

The criteria list is always subject to further customizations – please check this in case of updates.

The VALIDAT basis and the professional version fulfil the checking requirements as per VOLKSWAGEN Norm VW 01059 part 6. VALIDAT professional fulfils the requirements as per SASIG/VDA certification. With VALIDAT professional, you can thus check more criteria. The checking scope exceeds the requirements of Volkswagen.

The above extractions from the criteria table are valid only for the VALIDAT Version 7.0.2. The allocation of criteria to the licenses basis and professional can be changed in the coming versions.

5.2 Benefit of VALIDAT-Professional license

Where does the VALIDAT-Professional License bring a benefit?

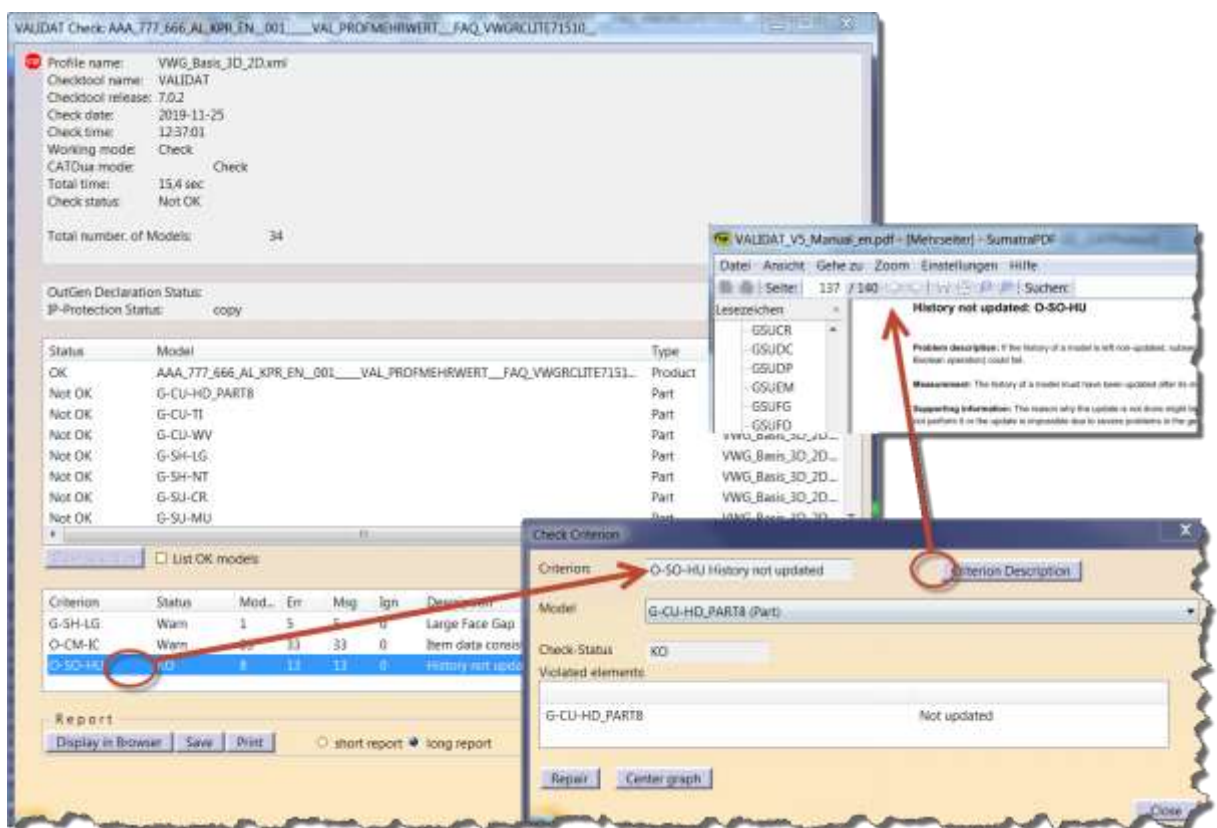
Each development partner must decide for himself, if the Validat Professional functionality has a benefit for him.

5.2.1 Check Result - handling and information content of standard check window enlarged

The Check Protocol for the check result can optionally be displayed as soon as the check has been completed, but it can also be opened at any time using the protocol icon in the VALIDAT main menu.

Here, users can also further evaluate the check results and even provide approval if appropriate.

The handling and the information content of the standard check windows can be enlarged by connecting of the professional-license under Tools/Options.

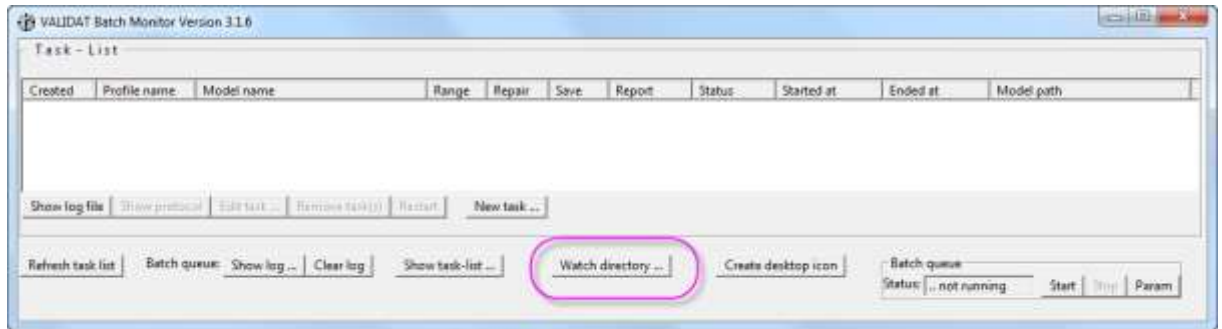


Please refer to Validat manual for more details.

5.2.2 Automated VALIDAT Check of CATIA Data

In batch mode, it is possible to activate an automatic time-defined check. The specific Directory is monitored for CATIA Data to be checked. Thereby for example your CATIA Data can be checked overnight.

For the automated VALIDAT Check of assemblies (ZSB, KPR) a PX1 license is also required because the root document has to be checked. An automated check of CATParts is possible without a PX1 license. Have a look to [VALIDAT structure analysis](#)



Detailed information about the automated directory monitoring could be read in the VALIDAT User manual.

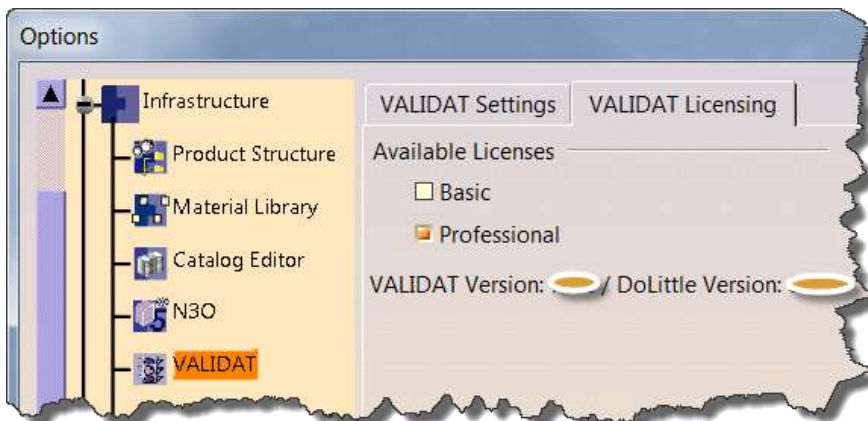
5.2.3 VALIDAT Professional License released automatically

Since VALIDAT 2.4.x Version the Professional license is automatically released after each use of a VALIDAT function.

With VALIDAT Basic the license is kept granted until VALIDAT Toolbar is closed.

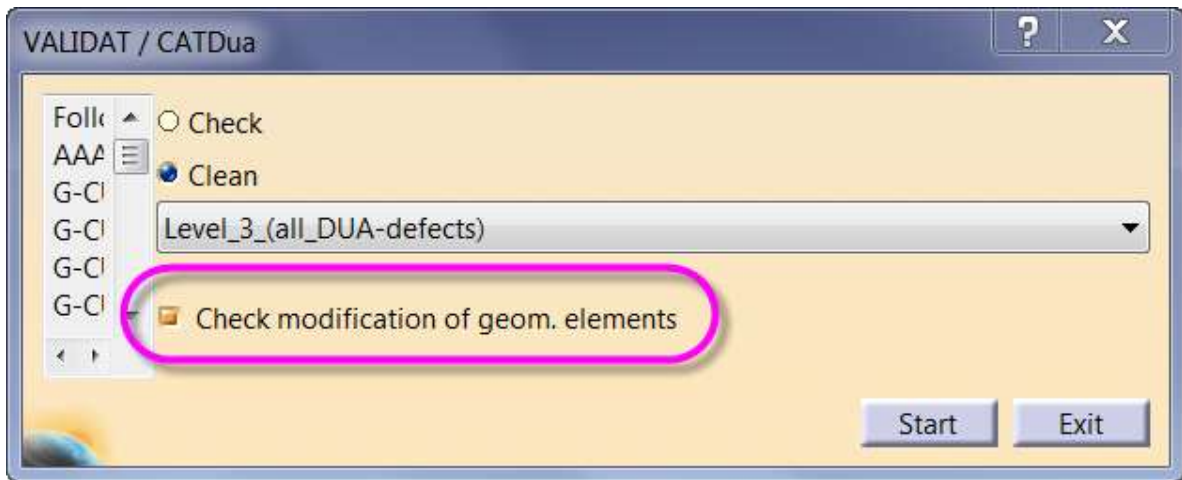
Notice - it is not necessary to finish the current CATIA Session; simply the VALIDAT-Toolbar needs to be closed. This could be done within the Pull-down Menu "View- Toolbars" by unmark "VALIDAT Version X.X.X", e.g.

It is also possible to enable the license by deselect "Basic" under „Tools- Options ...“ as shown below.



5.2.4 VALIDAT CATDua - extra Clean Option

Geometric changes after a VALIDAT-CATDUA-Clean can be displayed with the VALIDAT Professional license. For this purpose, the switch "Check modification of geom. elements" must be active.



5.3 VALIDAT structure analysis

You can run the structure analysis and link checking of CATIA V5-6 data locally on your computer. In case of successful checking of the structure you are guaranteed that the CATIA V5-6 data is not rejected by HyperKVS due to this criterion.

Validat Basis performs a simplified link analysis, Validat Professional performs an exact link analysis using your PX1 and VX1 license.

The function for the simplified link analysis (without PX1/VX1), existing since VALIDAT version 2.0.7, became with VALIDAT version 2.3.6 the standard testing method.

A PX1/VX1 license is still needed for automated directory monitoring of assemblies (ZSB, KPR) with VALIDAT Batch (Watch directory) because the root document has to be checked. The automated directory monitoring is only available in the VALIDAT Professional Version.

For automated directory monitoring of CATParts with VALIDAT Batch, only a VALIDAT Professional license is required, no PX1.

5.3.1 Historical background

The structure analysis option was not integrated up to VALIDAT Version 1.3.0 in VALIDAT. The structure analysis took place in the checking process of HyperKVS.

The option for local structure analysis has been created on the request of the development partners. It has been justified on the part of development partners that a rejection of the data in the HyperKVS due to incorrect structure is a big-time factor and if this could have been locally checked, this loss of time could be avoided.

With the introduction of VALIDAT Version 1.3.0, the option has been created to execute the structure analysis also with VALIDAT.

6 Benefit of VX1 / PX1 license

Where does PX1/VX1 bring a benefit?

VOLKSWAGEN recommends the deployment of PX1 (plus VX1). Since the PX1 license is not free of charge, each development partner must decide for himself, if the functionality acquisition has a benefit for him.

Note:

A VX1 license requires a PX1 license. A VX1 license without the PX1 license does not bring any functionality.

The PX1/ VX1 license is required for the following VWGRCLite Applications/Functions:

- NTool New From
- NTool Send To
- NTool Save Management
- KVS Plugin
- VALIDAT Professional – Automated Check, see Automated VALIDAT Check of CATIA Data
- VWGVarTool - VarTool batch starts functions “NTool Convert To ...” and “NTool Save Management”
- LTA RPS Diagnostic tool - option “Attach actually loaded model to the report”

7 Release of operating system / CATIA V5-6 combinations

The software is only provided for MS Windows 10 64 bit.

Since 01.01.2020 Windows 7 no longer released for VWGRCLite 7.1.5.x.

Chapter 2 of VWGRCLite Installation Guide gives more details, for example which language package and security update are allowed.

VWGRCLite	Operating system	CATIA V5-6
7.1.5.x.	MS Windows 10 64bit	CATIA V5-6R2018 SP03 Hotfix 27

There should be a bilateral agreement between the Volkswagen department and the development partner about the usage of a system environment.

Every usage of a non-Volkswagen released operating system and CATIA V5-6 combination is done on your own risk and will be not supported by Volkswagen in case of a problem.

8 License manager FlexNet

The VWGRCLite and the VWGRCLite Applications are licensed for FlexLM respectively FlexNet as license manager.

If you have licenses of the type “floating”, then a license server is required. If you have licenses of the type “Nodelock” then a license server is not required.

The adequate license manager could be downloaded at the ServiceNet. You will find the actual required FlexNet software at the short link <https://vwgroup.t-systems.com/flexlm>.

Here you will find software for the VW supported. There you will find the software for the platforms supported by VW and documentation for implementing of FlexNet licenses, as well as the topic of borrowing licenses.

9 Contacting the VWGRCLite Service Team – Service Desk

If you have questions concerning the VWGRCLite environment or the VWGRCLite Applications, please contact our Service Desk. The Service Desk can be accessed in the following ways:

- By telephone (Service Desk): +49 375 606199-19
- By e-mail (central mailbox): cax-consulting@t-systems.com

See also <https://vwgroup.t-systems.com/cax-contact>

9.1 You direct an inquiry to CAX Service, by telephone or email

Please specify your complete contact data this makes the subsequent contacting easier.

Also, so that your query reaches the correct processor, please simultaneously specify what type of query you have. e.g.:

- Questions on the order process or order form
- Proposal for Applications or Services
- Problems/Questions on VWGRCLite Installation
- Questions on integration of VWGRCLite Applications
- Registration of an application problem (software error)
- lodging a request (requirements to VWGRCLite or an VWGRCLite Application)

In case of problems with the VWGRCLite and/or the VWGRCLite Applications, please compile a traceable problem scenario based on a current VWGRCLite environment (VWGRCLite-Support Mail, screenshots, log files, configuration, working step till cancellation...) Note that the installation, configuration and use of the VWGRCLite must be in accordance with the documentation provided by Volkswagen.

Principle send the content of the VWGRCLite-Support Mail. See [VWGRCLite – Support Mail](#)

9.2 Reporting errors/problems related to VWGRCLite

Before reporting a problem, please have a look into the Known Problems list first (<https://vwgroup.t-systems.com/problems>).

Problem reports need a minimum amount of detailed data.

Please find a checklist and a document with further information on the page <https://vwgroup.t-systems.com/issues>.

For an issue or an error, please send us the following data:

- an understandable and comprehensible scenario of the issue or error
- the information according to the checklist
- the used license file

Hint:

The requested "Support Mail" could be generated within the VWGRCLite GUI at menu "Help".

Please refer to [VWGRCLite – Support Mail](#).

Attention:

For a thorough problem analysis possibly test data will be required.

Please do not share test data that are uncritical shippable via email and only after direct consultation with the VW Problem Management!

Reports with insufficient data cannot be processed!

9.3 Procedure for lodging a request

In order to implement requirements to VWGRCLite correctly, Volkswagen requires a precise description of the desired functionality.

A specification document, which must be delivered completely, is provided on the page <https://vwgroup.t-systems.com/request>.

Please do not summarize a collection of enhancement requests. Every requirement is done separately. For each request there is one incident number and one associated request number at VW.

We cannot give a warranty on the implementation of your requirement. The evaluation of your request for further development of VWGRCLite/ VWGRCLite Applications is the responsibility of software manufacturer (VOLKSWAGEN).

10 Best Practice

10.1 One way to configure the KVSPlugin

1. Create a directory named .kvs in the directory \$USERPROFILE
2. In this directory (\$USERPROFILE/.kvs) create a file named caddies.conf
The content of caddies.conf could look like this:
COMMON.TO_KVS=\${USERPROFILE};\KVS_EXCHANGE\TO_KVS
COMMON.FROM_KVS=\${USERPROFILE};\KVS_EXCHANGE\FROM_KVS
COMMON.KVS_BROWSER_PATH=IEXPLORE.EXE
COMMON.KVS_SERVER=https://kvspfv1.pfn.vwg:8081
COMMON.KVS_TRANSFER_LOG=\${USERPROFILE}/.kvs/transfer.log
CATIA.PX1_USAGE=1
CATIA.VX1_USAGE=1 (after entering this „1“ there must be a Enter so that the cursor jumps into a new line before saving)

3. Copy also the content of item 3 in a file named master_caddies.conf. Location is .kvs too.

4. Set the system variables \$CADDIES_HOME and \$KVSPLUGINPATH
(Control Panel/System/Advanced/Environment Variables)

This variables could be for example:

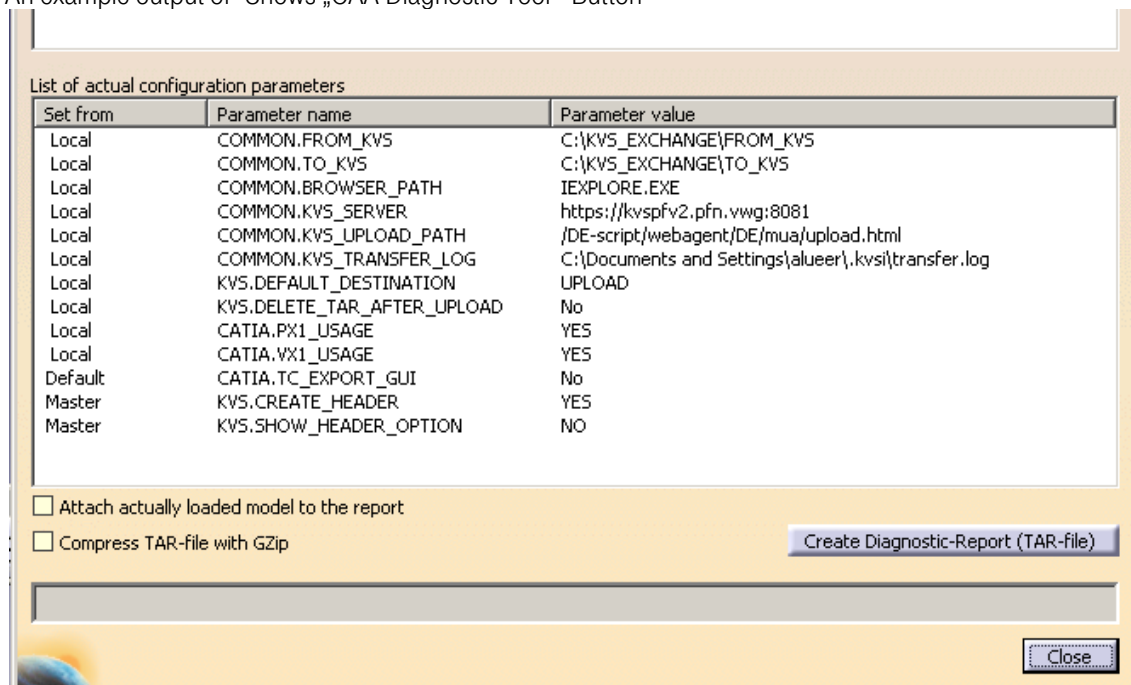
\$CADDIES_HOME=\${USERPROFILE}/.kvs

\$KVSPLUGINPATH=\${VWGRCLITE_K_PATH}\catia\vwgrclite_621090\opt\oem\vw_group\R26\CAA

Note:

A DASSAULT PX1 and a VX1 license must be available thus the KVSPlugin works.

An example output of “Shows „CAA-Diagnostic-Tool “-Button



Usage:

After using the KVS-structure-check your saved CATIA Data can be stored in KVS supported by KVSPlugin.

11 GRC 7.1.x – What's new

Please find the actual NEWS for VOLKSWAGEN Engineering Partner at <https://wgroup.t-systems.com/vwgrclite-news>.

11.1 VWGRCLite Web-Installer rollout - Dec 12, 2019

The rollout of the Volkswagen VWGRCLite Web-Installer is scheduled for January 6, 2020. The VWGRCLite Web-Installer will support you in obtaining the VWGRCLite packages and in setting up the VWGRCLite environment on the end user system. It is a locally executed application that dynamically downloads the packages required to configure the VWGRCLite environment from the VWGRCLite ServiceNet and optionally installs them on the target system.

In order to be able to use the VWGRCLite Web-Installer, you need a user account for the VWGRCLite ServiceNet.

The current provision of the VWGRCLite packages on the VWGRCLite-ServiceNet will continue in parallel during a planned transition period of 6 weeks. According to this, VWGRCLite packages can only be obtained using the VWGRCLite Web-Installer.

Important:

The guidelines, rules and specifications communicated in the project and the agreements on the system environment (VWGRCLite) continue to apply.

11.2 NEWS - New DoLittle package 7.0.1.2.0 available - Sep 6, 2019

For VWGRCLite 7.1.5.1.0 the new DoLittle package (version 7.0.1.2.0) is available at the ServiceNet since 09/06/2019.

Due to extended security requirements of the DoLittle server, the DoLittle Client had to be modified. The VWGRCLite DoLittle package 7.0.1.2.0 contains the DoLittle Client version 4.5.3.

More details on changes can be found in the DoLittle Release Notes and the updated documentation in the vwgrclite_vwgdolittle_documentation.zip package.

The installation of DoLittle 7.0.1.2.0 must be done till 09/30/2019 at latest.

After 09/30/2019 the DoLittle server will only answer requests from a DoLittle client if it has at least version 4.5.3.

The VWGRCLite DoLittle download for software and documentation can be found at <https://wgroup.t-systems.com/download-dolittle>

Your current DoLittle access-data remain valid within the new DoLittle version.

Any used dss-files can still be used if they have already been created with the current DL_DssAdmin (Version 7.0.0).

When using a partner company access (CSN), pay attention to the also available documentation REQUIREMENTS_CERTIFICATES.pdf.

11.3 NEWS - Important information about the VWGRCLite 7.1.5.1.0 patch - Aug 8, 2019

Since 08/08/2019 VWGRCLite Version 7.1.5.1.0 is available at the ServiceNet.

Following changes:

- CATIA V5-6R2018 SP03 HF27 (among others the CATIA problems with shareable licenses has been solved)
- Base Paket Version 7.1.5.1.0 (with bug fixing from NTool, OutGen, Validat)
- Seat Markenpaket Version 4.0.0.1 (Drafting / Layout settings issue has been fixed)

Change details can be found in the provided Release Notes (VWGRCLite_71510_Release_Notes_EN.zip).

All other packages from the VWGRCLite 7.1.4.5.3 can also be used for the VWGRCLite 7.1.5.1.0.

An overview with links to all released VWGRCLite packages can be found at:

<https://wgroup.t-systems.com/vwgrclite>

Please note: With VWGRCLite 7.1.5.1.0, Windows 7 is only supported until 31.12.2019. A timely transition to Windows 10 is recommended.

The switch from VWGRCLite 7.1.4.5.3 to VWGRCLite 7.1.5.1.0 must have taken place at the development partner from 08/08/2019 to 09/30/2019.

In case of problem (e.g. use of CATIA shareable licenses) the switch is recommended immediately.

Keep in mind: Only for the currently released VWGRCLite support is provided.

Important: The project agreements about terms of reference, rules and specifications as well as the system environment (VWGRCLite) are still valid.

12 Known Problems

Please note the Known Problems at <https://vwgroup.t-systems.com/issues>. This page contains information about problems/workarounds, which become known with latest VWGRCLite.

12.1 File %TEMP%\inst_grx.lock

During an (un-)installation errors can occur which leave a file named ".inst_grx.lock" under %TEMP%. This file then blocks any further (un-)installation procedures. Deleting this file can help then.

12.2 Installation on existing VWGRCLite installation

On the initial installation of the Base Packages, neither the VWGRCLite rootdir must exist, nor the VWGRCLite environment variables. Uninstallation with VWGRCLite Installer GUI or VWGRCLite Installer command line must be set. Therefore prior to installing a new VWGRCLite release, the previous VWGRCLite version must be uninstalled entirely.

The uninstall process is described in detail in "VWGRCLite Installation Guide", which could be found on the page "[VWGRCLite Information](#)".

13 VWGRCLite

The VWGRCLite includes the released CATIA partner environments of participating Volkswagen brands and departments.

Additionally a set of licensed Volkswagen applications are integrated into the VWGRCLite.

For access to all information and downloads of the current released VWGRCLite you have to do the registration as described in chapter 2.2.2 [ServiceNet account - Registration and "Forgot your password?"](#).

After Login you have access to this VWGRCLite page [VWGRCLite](#):

VWGRCLite

The following provided information is agreed with the responsible persons of the Volkswagen AG.

Due to the increasingly complex dependencies in the Volkswagen CATIA V5-6 partner environments, Volkswagen has decided to merge many of the previously necessary installation components into a unified routine (the VWGRCLite). Special installation packages will be delivered for the VWGRCLite.

Important: Volkswagen internally uses the Group Reference CATIA (GRC) 7.1.5.0. For development partners currently VWGRCLite 7.1.5.1.0 is released. The support for VWGRCLite 7.1.4.5.3 ends with the providing of the new VWGRCLite version 7.1.5.1.0. Please always note the information on the [NEWS](#) page.

VWGRCLite
Scope
Licensing
Installation

13.1 VWGRCLite – requirements and prerequisites

Before you install any software, it is essential to read the information and documentation about VWGRCLite installation/administration on the page "[VWGRCLite Information](#)".

13.2 VWGRCLite – Tips and Tricks

13.2.1 Service Net – Quicklinks Brands

At ServiceNet there are Quicklinks for customers who are familiar with the VWGRCLite installation procedure.

There are two possibilities to find all the downloads of the VWGRCLite for a corresponding brand.

The image shows two screenshots of the T-Systems website. The top screenshot is the homepage, featuring a navigation bar with links for NEWS, LICENSE ORDER, DOWNLOADS, ADDITIONAL INFORMATION, and SPECIALS. A large banner area contains a 'WELCOME' message and a list of brand quicklinks: Brand VW, Brand Audi, Brand Skoda, Brand SEAT, and Brand Lamborghini. Below this, there are buttons for CATIA V5-6R2018, VWGRCLite 8.2.4, and T-SYSTEMS ORDER PROCESS. The bottom screenshot shows the 'DOWNLOADS' menu expanded, listing various software categories and brand-specific links. The brand-specific links (BRAND VW, BRAND AUDI, BRAND SKODA, BRAND SEAT, BRAND LAMBORGHINI) are highlighted with a blue box.

13.2.2 VWGRCLite – Support Mail

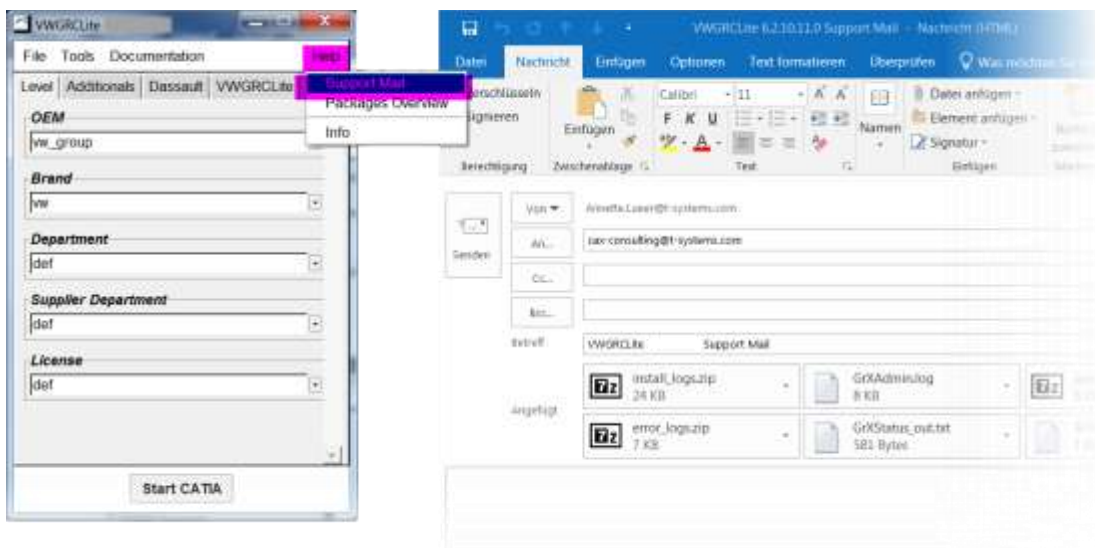
If you want to report a problem regarding the VWGRCLite to the CAX-Service (support interface regarding the VWGRCLite), please use the function “Support Mail” in the menu “Help”.

Using this function will collect all relevant information about your system environment. Following this an Outlook mail with the recipient cax-consulting@t-systems.com and the collected information will be displayed.

In case of problems regarding VWGRCLite applications (e.g. Validat, NTool, etc.) you should extend this mail by a reproducible problem scenario description (e.g. steps taken until the problem occurs, output of diagnosis functions of the application, screenshots, etc.).

Important hint: If you want to report a problem, please regard the Volkswagen „checklist “ at <https://vwgroup.t-systems.com/issues>.

Caution: It is recommended to let your administrator, or your CAD support, check those problems first, before reporting them to the CAX-Service.



13.2.2.1 VWGRCLite – Support Mail without Outlook installation

The automatic support mail will be created only if Microsoft Outlook is installed and configured as the default mailing application. If this is not the case, you will be asked to save the needed VWGRCLite log and system files (e.g. to C:\temp). Afterwards you can attach them to your e-mail.